

**Impact of Social Determinants
on the Healthcare
of Older Persons**

Jerryl Birchmeier RN, BSN, CCM, ADAC
Wendy Jones BS Business Administration and Marketing


1

Disclosures

There are no potential conflicts of interest contained in the information provided in this presentation. All material is the opinion of the presenters or cited to source and/or authority.

2

2



OBJECTIVES
After attending this session, professionals will be able to:

1. Recognize 3 Social Determinants of Health that impact older adults
2. Identify red flags that are often overlooked when considering the safety of older persons
3. Describe 5 resource tools for case managers to use for older persons.

3

3



4

What are Social Determinants of Health?

- CDC Definition: Social determinants of health (SDOH) are the nonmedical factors that influence health outcomes. They are the conditions in which people are born, grow, work, live, and age, and the wider set of forces and systems shaping the conditions of daily life.
- Office of Disease Prevention and Health Promotion definition: Social determinants of health (SDOH) are the conditions in the environments where people are born, live, learn, work, play, worship, and age that affect a wide range of health, functioning, and quality-of-life outcomes and risks.

5

5


Social Determinants of Health intersect where professionals provide care for seniors

If we fail to recognize the Social Determinants affecting an individual, we may fail to provide them the most essential help they require to improve their health situation.

6


**CMS measures
12 SDoH**

1. Employment Insecurity
2. Psychosocial Circumstances
3. Housing Insecurity
4. Social Adversity
5. Transportation
6. Food Insecurity
7. Education and illiteracy
8. Occupational risk
9. Economic Insecurity
10. Lack of support
11. Upbringing Issues
12. Language



7

HHS Chart of Social Determinants of Health



Social Determinants of Health
Copyright 2014
Healthy People 2030

8

CMSA and Social Determinants of Health



9

Joint Commission R3 Report requirement, rationale, reference

New Requirements to Reduce Health Care Disparities

Requirements announced June 22, 2022
and Effective January 1, 2023

HRSN – Health Related Social Needs are frequently
identified as root causes of disparities in health outcomes

10

10

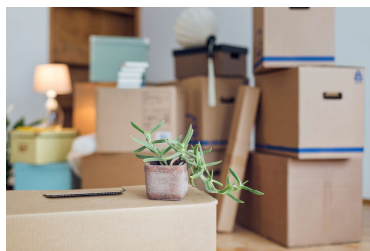
3 Social Determinants of Health that Impact our Aging Population

- 1. Housing
- 2. Nutrition / Food Insecurity
- 3. Lack of Support and Social Issues

11

11

Housing

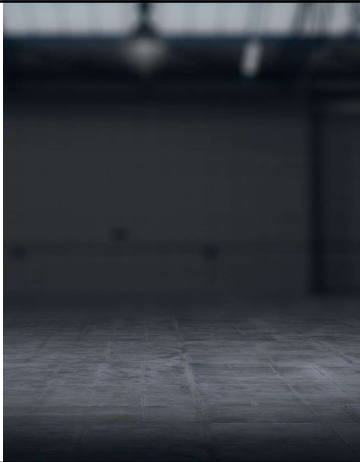


12

12

The different ways we see housing impact our clients

- Home is unfit due to hoarding or environment suddenly not being maintained appropriately, inside and out
- Frequent falls due to so many stairs or obstacles / clutter
- Wandering out of their houses looking for their "home" (typically the home of their youth)
- No support in the home to get their care needs met routinely
- Many are unwilling to move out of unsafe neighborhood or home
- Utilities turned off due to bills not being paid
- Moving a person out of their familiar environment can lead to challenging adjustments



13

Nutrition / Food insecurity



14

Food Insecurity / Improper Diet



Eating out daily at fast food or restaurants



No way to obtain food routinely due to limited financial resources



Poor understanding of Medical Diet due to lack of education or ability to comprehend the materials



Inability to safely cook. Some food programs do not have food consistent with prescribed dietary restrictions

15


15



LACK OF SUPPORT / SOCIAL ISSUES

16

16



Did you ask enough questions, to get to the core of the situation??

17

17

RED FLAGS MEAN HELP IS NEEDED

- WEIGHT LOSS / WEIGHT GAIN
- DEPRESSION / CHANGE IN MENTAL STATUS
- POOR HYGIENE
- POOR HOME/ YARD MAINTENANCE
- MISSING APPOINTMENTS
- HARD TIME GETTING AROUND / FALLS
- UNSAFE DRIVING

18

18

- MEDICATION CONFUSION 
- PHONE CALLS AT ODD HOURS 
- POOR MONEY MANAGEMENT 
- FORGETFULNESS 


19

HOW TO FIND THE RED FLAGS?



20

SPECIALTY
FOODS
MEAL
SERVICES



21



VETERANS BENEFITS

Aid and Attendance

- Veteran and/or Surviving Spouse
- Honorably Discharged (DD214 form)
- Served 90 days Active Duty with 1 day during wartime
- Over Age 65
- Need assistance with ADL's

22

Eligible War Periods for Aid and Attendance Benefits

- Mexican Border period (May 9, 1916, to April 5, 1917)
- World War I (April 6, 1917, to November 11, 1918)
- World War II (December 7, 1941) to December 31, 1946)
- Korean Conflict (June 27, 1950, to January 31, 1955)
- Vietnam War era – serving in the Republic of Vietnam (November 1, 1955, to May 7, 1955)
- Vietnam War – serving outside the Republic of Vietnam (August 5, 1964, to May 7, 1975)
- Gulf War (August 2, 1990 – Ongoing)

23

2023 Maximum Monthly Rates for Aid & Attendance Pension

- Single Veteran \$2,229.00
- Veteran with Spouse or Dependent \$2,642.00
- Surviving Spouse of a Veteran \$1,432.00
- Healthy Veteran – Spouse needs care \$1,750.00

24

MEDICAID

- State funded
- Qualification is based on income, and must be medically necessary
*5-year look-back period
- Utilized for coverage in Long Term Care / Nursing Homes
- Independent or Assisted Living communities cannot take Medicaid
- Alternative: MI Choice Waiver

25

easterseals

RESOURCES

- Children and families
- Adults
- **Seniors**
- Military and Veteran Caregivers
- Caregivers

Services available for Seniors

- Employment for Seniors
- In-Home Care
- Adult Day Services
- Therapy & Rehabilitation care
- Transportation

26

26

easterseals | MORC


Home Services Offered for Seniors
Services vary by community but could include:

- Adult day health
- Chore services
- Community living supports
- Transition supports
- Counseling services
- Environmental adaptations
- Goods and services
- Home delivered meals
- Non-Medical transportation
- Personal Emergency Response Systems
- Private duty nursing
- Respite Care
- Self-Determination with fiscal intermediary
- Specialized Medical Equipment
- Training

Senior Services Contact
Phone: 866-593-7413
Fax: 586-228-7029

27

27



Area Agency on Aging 1-B
Answers you can trust

“AAA Specializes in Resources for the aging population and those with Disabilities” - AAA – 1B Representative

tel:800-852-7795 <https://aaa1b.org/>

28

28

MI Choice Waiver Program

MI Choice is a program that provides an array of Medicaid-covered nursing home services to anyone *age 18 or older* so that they can remain in their home with the same level of service. To qualify for the program, you must be:

1. Medically eligible for nursing home care

AND

2. Financially eligible for Medicaid. For 2023 that means income at or below \$2,742 a month and no more than \$2,000 of countable assets.

29

29



SERVICES FOR SENIORS

SERVICES FOR SENIORS	More Offerings
<ul style="list-style-type: none"> Information and Assistance In – Home Care Meals on Wheels Community Dining Transportation for Seniors Long Term Care Ombudsman Senior Centers Assistance for LBGT Seniors 	<ul style="list-style-type: none"> Caregiver Resources Medicare and Medicaid Help Senior Health and Wellness News and Events Educational Classes <ul style="list-style-type: none"> Fall Prevention Diabetes PATH Chronic Pain and Chronic Illness Weight Loss

30

30



Social services

- Day center services and recreational activities
- Interdisciplinary team (IDT) assessment and treatment planning
- Social work services
- Medical and day center transportation
- Personal care, meals and home chores

Medical services

- Primary care services
- Registered nurse services
- Pharmacy / medications
- Dental and vision services
- Podiatry and audiology services
- Medical equipment and supplies
- Behavioral health and substance abuse services
- Health education
- End-of-life care
- Hospital care
- Laboratory services
- X-rays and diagnostic services
- Emergency services
- End-stage renal disease service

31

31

Additional PACE Services

Additional services

- Rehabilitation therapy services
- Occupational therapy services
- Prosthetics / orthotics
- Skilled home health services
- Nutritional counseling
- Medicare and Medicaid covered services
- Other services determined as necessary by the IDT
- On call, 24-hour physician coverage, 365 days a year
- Spiritual Care services

32


32

PLACEMENT Specialists Solve Puzzles

PROVIDE • PROVIDE RESOURCES AND SUPPORT TO THE PERSON IN NEED AND THEIR FAMILIES

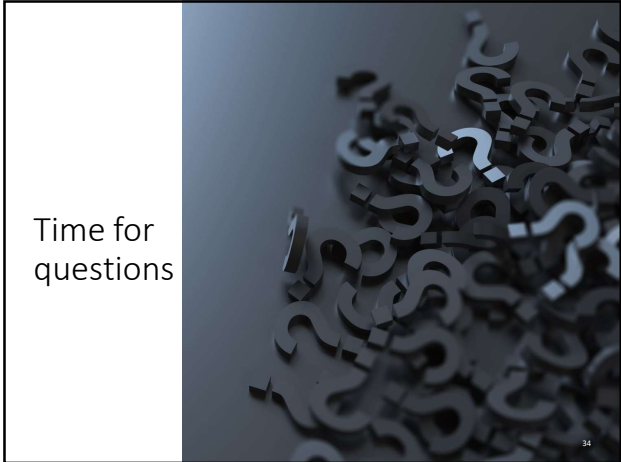
SIMPLIFY • SIMPLIFY THE PROCESS OF FINDING SUPPORT IN OVERWHELMING CIRCUMSTANCES

SEEK • SEEK LOCATIONS FOR SENIORS TO GET ASSISTANCE WITH RESPECT AND DIGNITY



33

33



34



35



36

Contact Information

Wendy Jones:



Website: www.NextSteps4Seniors.com



Phone: (248) 651-5010



Email: office@NextSteps4Seniors.com

Jerryl Birchmeier:



Phone: (248) 925-9997



Email: Jerryl4Seniors@gmail.com
